

**TRANSPORTATION  
DESIGN  
CONSULTANTS**  
166 MOCCASIN CANYON  
CEDAR CREEK TX 78612  
512-507-6004

**LOC CONSULTANTS LLP**  
F-4756  
1000 E. CESAR CHAVEZ  
AUSTIN TX 78702  
512-499-0908

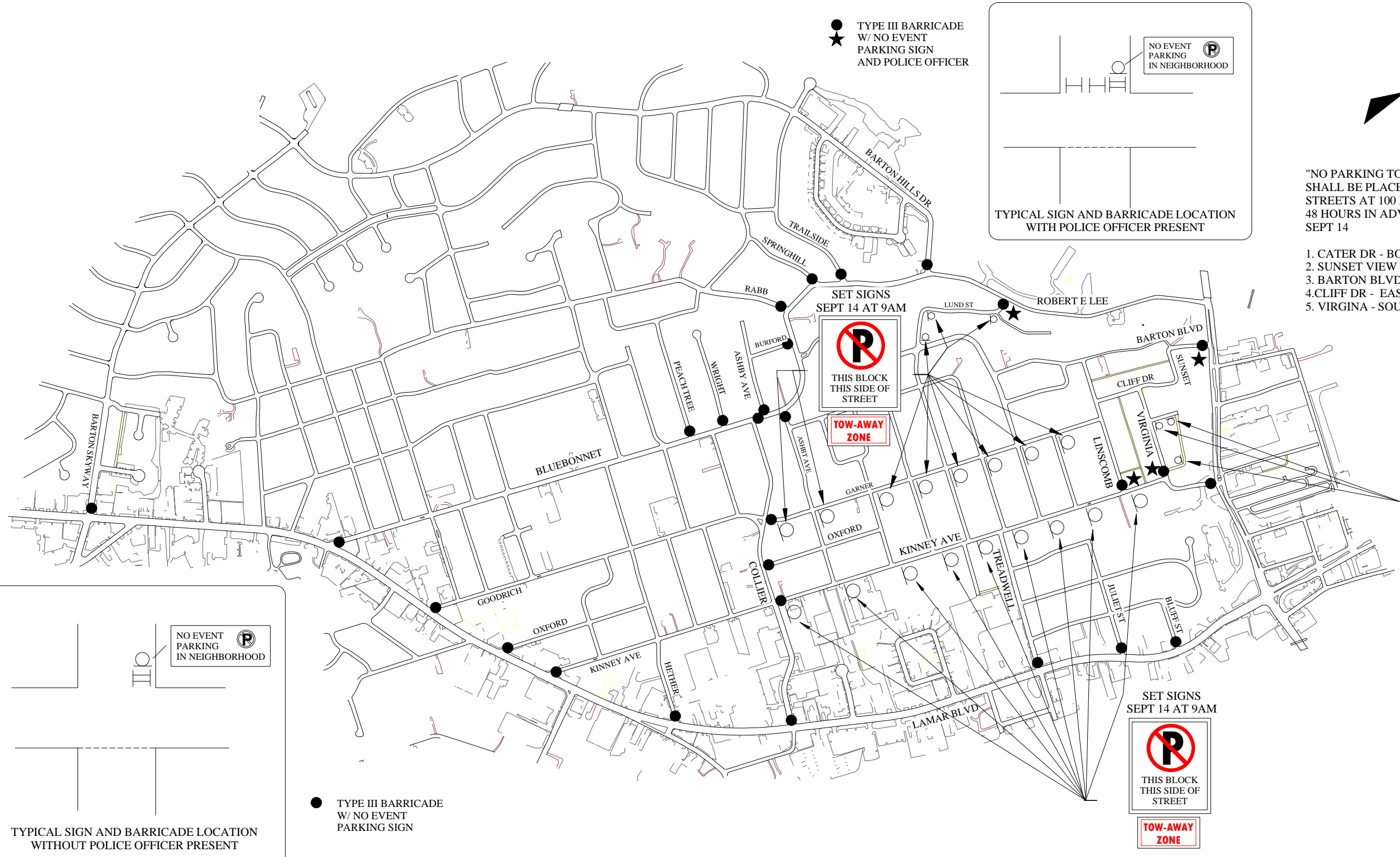
**AUSTIN CITY LIMITS  
MUSIC FESTIVAL 2011**  
INSTALL SEPTEMBER 16, 2011 12:01 AM

*THIS COMPLETE PLAN  
IS DEVELOPED UNDER  
THE DIRECTION OF  
SERGIO LOZANO-SANCHEZ P.E. 89158  
STATE OF TEXAS*

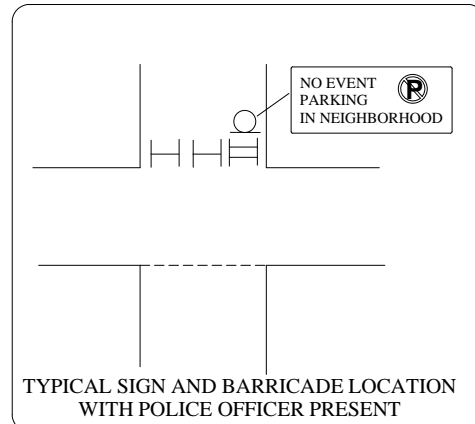
LOC CONSULTANTS LLP  
F-4756

**PAGE  
11**  
NOT TO  
SCALE

© COPYRIGHT 2011  
TRANSPORTATION  
DESIGN CONSULTANTS



● TYPE III BARRICADE  
★ W/ NO EVENT  
PARKING SIGN  
AND POLICE OFFICER



"NO PARKING TOW AWAY" SIGNS  
SHALL BE PLACED ON FOLLOWING  
STREETS AT 100 FOOT SPACING  
48 HOURS IN ADVANCE AT 9AM  
SEPT 14

1. CATER DR - BOTH SIDES
2. SUNSET VIEW - BOTH SIDES
3. BARTON BLVD - BOTH SIDES
4. CLIFF DR - EAST SIDE
5. VIRGINIA - SOUTH SIDE

SET SIGNS  
SEPT 14 AT 9AM



TOW-AWAY  
ZONE

SET SIGNS  
SEPT 14 AT 9AM

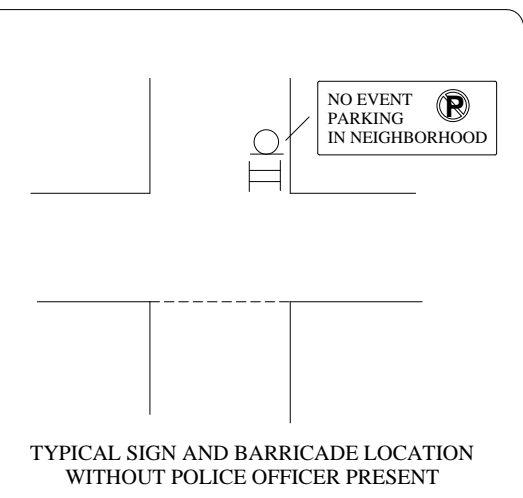


TOW-AWAY  
ZONE

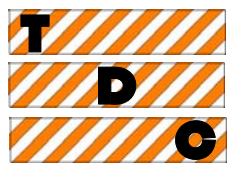
SET SIGNS  
SEPT 14 AT 9AM



TOW-AWAY  
ZONE



● TYPE III BARRICADE  
W/ NO EVENT  
PARKING SIGN



**TRANSPORTATION  
DESIGN  
CONSULTANTS**  
166 MOCCASIN CANYON  
CEDAR CREEK TX 78612  
512-507-6004

LOC CONSULTANTS LLP  
F-4756  
1000 E. CESAR CHAVEZ  
AUSTIN TX 78702  
512-499-0908

# AUSTIN CITY LIMITS MUSIC FESTIVAL 2011

INSTALL SEPTEMBER 16, 2011 08:00 AM  
UNLESS OTHERWISE NOTED IN PLAN

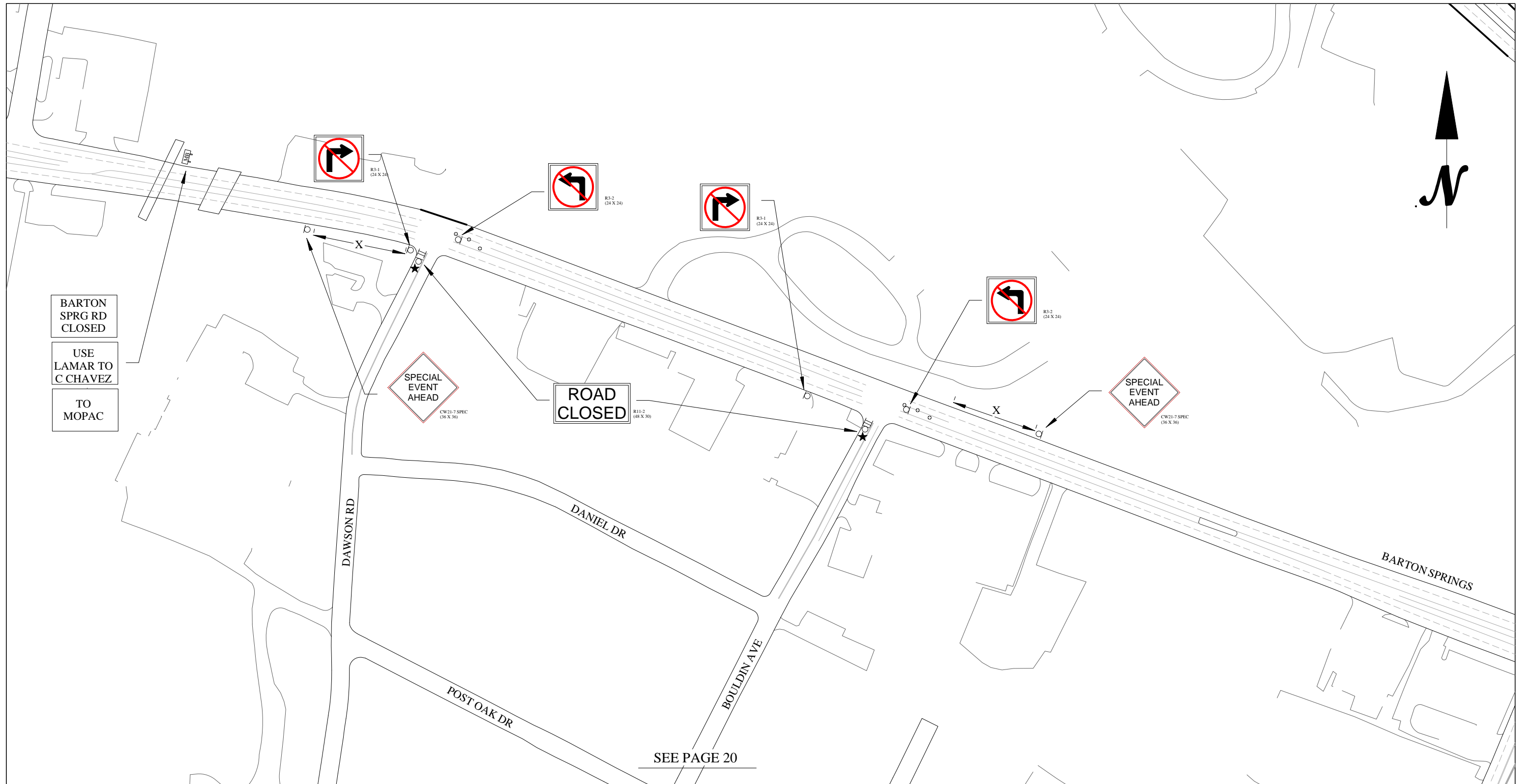
*THIS COMPLETE PLAN  
IS DEVELOPED UNDER  
THE DIRECTION OF  
SERGIO LOZANO-SANCHEZ P.E. 89158  
STATE OF TEXAS*

LOC CONSULTANTS LLP  
F-4756

PAGE  
18

NOT TO  
SCALE

© COPYRIGHT 2011  
TRANSPORTATION  
DESIGN CONSULTANTS



SEE PAGE 20



**TRANSPORTATION  
DESIGN  
CONSULTANTS**  
166 MOCCASIN CANYON  
CEDAR CREEK TX 78612  
512-507-6004

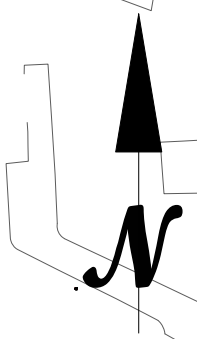
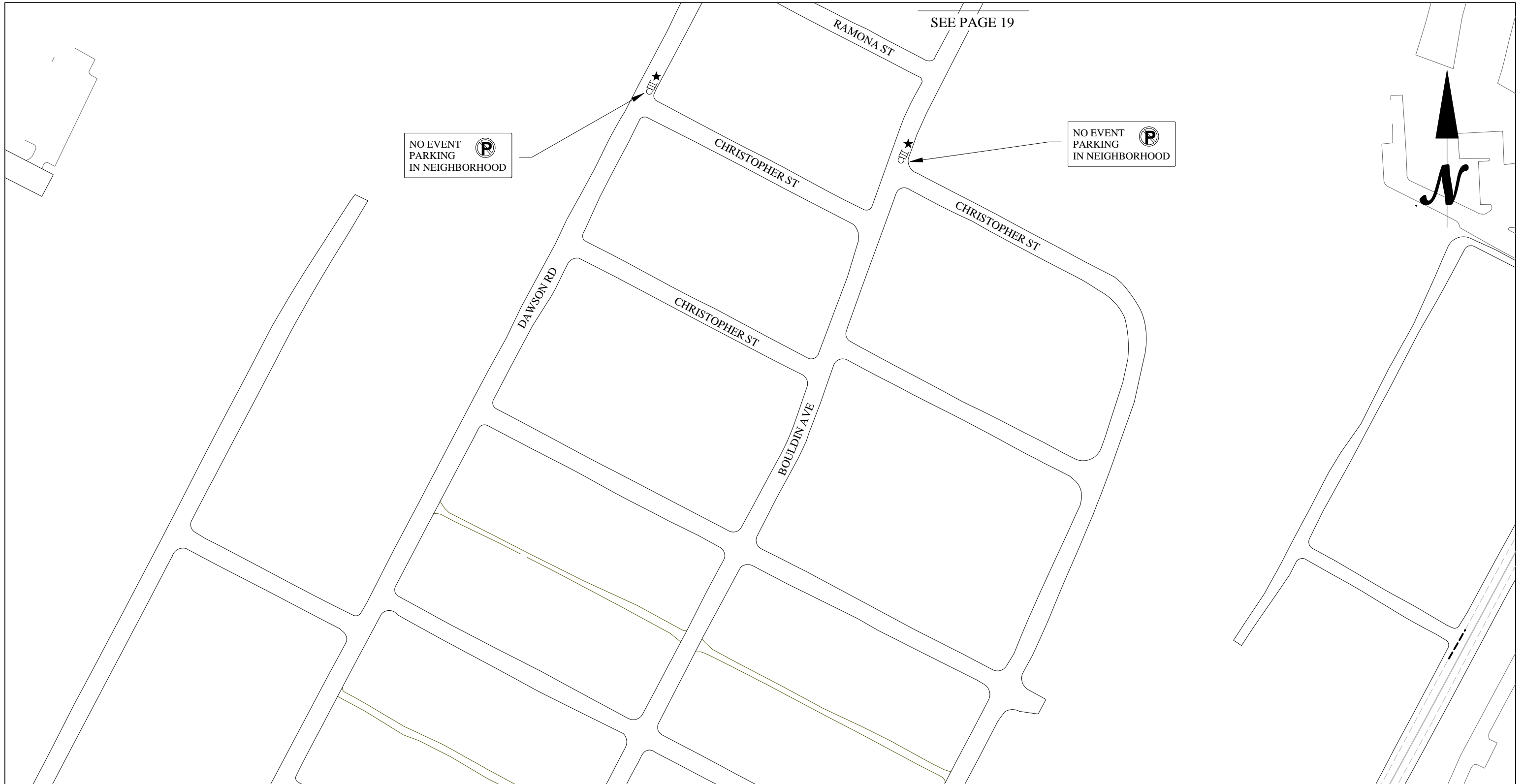
**LOC CONSULTANTS LLP**  
F-4756  
1000 E. CESAR CHAVEZ  
AUSTIN TX 78702  
512-499-0908

**AUSTIN CITY LIMITS  
MUSIC FESTIVAL 2011**  
INSTALL SEPTEMBER 16, 2011 08:00 AM  
UNLESS OTHERWISE NOTED IN PLAN

*THIS COMPLETE PLAN  
IS DEVELOPED UNDER  
THE DIRECTION OF  
SERGIO LOZANO-SANCHEZ P.E. 89158  
STATE OF TEXAS*

LOC CONSULTANTS LLP  
F-4756

**PAGE  
19**  
NOT TO  
SCALE  
© COPYRIGHT 2011  
TRANSPORTATION  
DESIGN CONSULTANTS



**TRANSPORTATION  
DESIGN  
CONSULTANTS**  
166 MOCCASIN CANYON  
CEDAR CREEK TX 78612  
512-507-6004

**LOC CONSULTANTS LLP**  
F-4756  
1000 E. CESAR CHAVEZ  
AUSTIN TX 78702  
512-499-0908

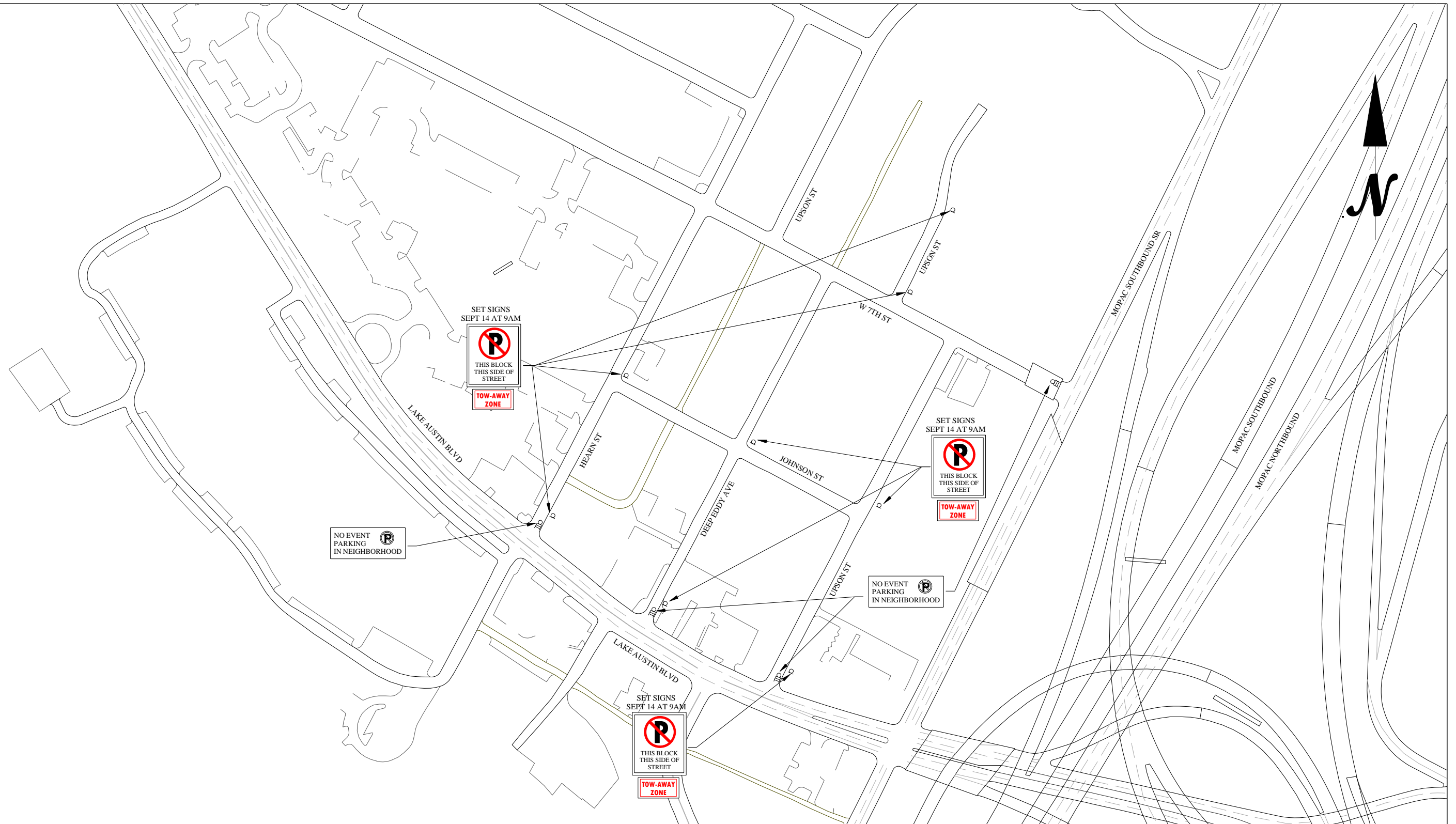
**AUSTIN CITY LIMITS  
MUSIC FESTIVAL 2011**  
INSTALL SEPTEMBER 16, 2011 08:00 AM  
UNLESS OTHERWISE NOTED IN PLAN

*THIS COMPLETE PLAN  
IS DEVELOPED UNDER  
THE DIRECTION OF  
SERGIO LOZANO-SANCHEZ P.E. 89158  
STATE OF TEXAS*

LOC CONSULTANTS LLP  
F-4756

**PAGE  
20**  
NOT TO  
SCALE

© COPYRIGHT 2011  
TRANSPORTATION  
DESIGN CONSULTANTS



**TRANSPORTATION  
DESIGN  
CONSULTANTS**  
166 MOCCASIN CANYON  
CEDAR CREEK TX 78612  
512-507-6004

**LOC CONSULTANTS LLP**  
F-4756  
1000 E. CESAR CHAVEZ  
AUSTIN TX 78702  
512-499-0908

**AUSTIN CITY LIMITS  
MUSIC FESTIVAL 2011**  
INSTALL SEPTEMBER 16, 2011 08:00 AM  
UNLESS OTHERWISE NOTED IN PLAN

*THIS COMPLETE PLAN  
IS DEVELOPED UNDER  
THE DIRECTION OF  
SERGIO LOZANO-SANCHEZ P.E. 89158  
STATE OF TEXAS*

LOC CONSULTANTS LLP  
F-4756

**PAGE  
21  
NOT TO  
SCALE**

© COPYRIGHT 2011  
TRANSPORTATION  
DESIGN CONSULTANTS